



OWNER'S MANUAL

Fender®
www.fender.com

Important Safety Instructions



- This symbol warns the user of dangerous voltage levels localized within the enclosure of the unit.



- This symbol advises the user to read all accompanying literature for safe operation of the unit.

- Read, retain, and follow all instructions. Heed all warnings.
- Only connect the electric line cord to an earth grounded AC receptacle in accordance with the voltage and frequency ratings listed under INPUT POWER on the rear panel of this product.
- **WARNING:** To prevent damage, fire or shock hazard, do not expose this unit to rain or moisture.
- Unplug the AC power line cord before cleaning the unit exterior (use a damp cloth only). Wait until the unit is completely dry before reconnecting it to power.
- Maintain at least 6 inches of unobstructed air space behind the unit to allow for proper ventilation and cooling of the unit.
- This product should be located away from heat sources such as radiators, heat registers, or other products that produce heat.
- This product may be equipped with a polarized plug (one blade wider than the other). This is a safety feature. If you are unable to insert the plug into the outlet, contact an electrician to replace your obsolete outlet. Do not defeat the safety purpose of this plug.
- Protect the power cord from being pinched or abraded.
- This product should be serviced by qualified service personnel when: the power supply cord or the plug has been damaged; or objects have fallen, or liquid has been spilled onto the product; or the product has been exposed to rain; or the product does not appear to operate normally or exhibits a marked change in

performance; or the product has been dropped, or the enclosure damaged.

- Only use a cart or stand with this product that is recommended by this product's manufacturer.
- The power supply cord of this product should be unplugged from the outlet when left unused for a long period of time, or during electrical storms.
- Do not drip nor splash liquids, nor place liquid filled containers on the unit.
- **CAUTION:** No user serviceable parts inside, refer servicing to qualified personnel only.
- Fender® amplifiers and loudspeaker systems are capable of producing very high sound pressure levels which may cause temporary or permanent hearing damage. Use care when setting and adjusting volume levels during use.

FCC COMPLIANCE NOTICE

This equipment has been tested and found to comply within the limits for a Class B digital device, pursuant to Part 15 of the FCC rules. These limits are designed to provide a reasonable protection against harmful interference in a residential installation. This equipment generates, uses and can radiate radio frequency energy and if not used in accordance with the instructions, may cause harmful interference to radio communications and there is no guarantee that interference will not occur in a particular installation. If this equipment does cause harmful interference to radio or television reception, which can be determined by turning the equipment off and on, the user is encouraged to try to correct the interference by one or more of the following measures: reorient or relocate the receiving antenna, increase the separation between the equipment and receiver, connect the equipment into an outlet on a circuit different from that of the receiver. Consult the dealer or an experienced radio/TV technician if help is needed.

A PRODUCT OF:
FENDER MUSICAL INSTRUMENTS CORPORATION
CORONA, CALIFORNIA USA

Trademarks:
Fender®, G-DEC®, Blackface™ and Dyna-Touch™ are trademarks of FMIC.
Other trademarks are property of their respective owners.
© 2006 FMIC. All rights reserved.

Introduction

G-DEC® Guitar Digital Entertainment Center includes everybody in the band but you! Inside G-DEC you will find a versatile drummer, skilled bass player and flexible accompanist for virtually any style of music. And for you, the guitarist: G-DEC is a warehouse of amplifiers and effects, and what's better—these are ready for your sound check!

Turn the G-DEC Data Wheel to access a diverse collection of band setups. 50 permanent presets furnish a diverse collection always available to you. Another 50 rewritable presets store the bands that you create for your music and playing style.

G-DEC is the ultimate practice tool whether you are just starting out or playing professionally. As a beginner, you can have an instructor plug into the

rear input. To learn a new song you can plug your CD or MP3 player into the G-DEC and play along. For difficult licks you can record a phrase and play it in a continuous loop—at *half speed* if necessary! Seasoned players enjoy G-DEC as a songwriting partner or jamming buddy.

G-DEC also has MIDI ports which allow you to link up with other G-DEC players to trade presets. Connect G-DEC to your computer* to backup presets or play General MIDI files through G-DEC!

It's time to jam—with G-DEC at your command!

*MIDI capable sound card (or MIDI-to-USB device) and MIDI software required.

Features

Each G-DEC Preset is a complete "band!" Modify any component or select another from the G-DEC arsenal:

- 17 Guitar Amplifiers, each with Gain, Volume, Tone, Compressor, Timbre and Noise Gate parameters
- 29 studio-quality Effects (many in stereo), each with 4 adjustable parameters
- 10 Reverbs with adjustable levels
- 70 Drum Patterns (+1 Metronome) with Tempo, Key, Drum Level, Bass Level and Accompaniment Level parameters

G-DEC MIDI ports provide expanded functionality with your computer and other G-DEC players!

- Trade and backup presets
- Play MIDI files
- Update G-DEC software if necessary
- Front panel MIDI IN and MIDI OUT ports

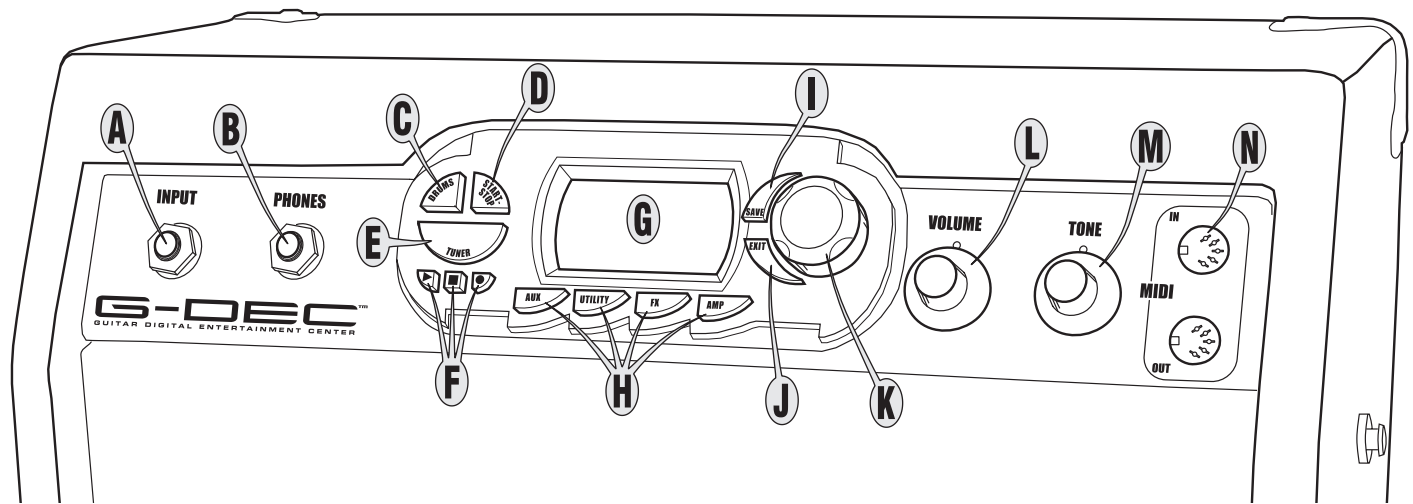
G-DEC delivers world-class Fender tone and world-standard Fender quality!

- Second input jack for a friend or instructor
- On-board digital chromatic tuner
- Phones jack can be used with stereo headphones or as a stereo line out jack
- Shoulder strap
- 14-second Phrase Sampler
- On-board General MIDI synthesizer

Thank you for choosing Fender®

—Tone, Tradition and Innovation—since 1946

Control Panel Overview



A. INPUT - Plug your guitar in here.

B. PHONES - Plug in your headphones for private listening or connect a pair of powered speakers (such as commonly used with computers); the G-DEC speaker mutes automatically. Enjoy the G-DEC's many stereo effects through this jack. You can also connect PHONES to "Audio In" on your computer to record with your favorite recording software. **NOTE:** You will need the proper cables, adapters and/or equipment for these connections.

C. DRUMS - Press to access the Drums Mode menus (see page 10).

D. START-STOP - Press to start and stop the drum loop. The START-STOP button flashes in time with the tempo. You can also use START-STOP to set the tempo:
Shortcut 1—Hold START-STOP while rotating the Data Wheel.

Shortcut 2—Hold DRUMS while tapping START-STOP to the beat, to set the tempo by "feel."

E. TUNER - Press to activate the Tuner (the G-DEC speaker mutes automatically).

F. PHRASE SAMPLER - Use the Phrase Sampler to record up to 14 seconds of G-DEC audio for playback. Press:

- *Record*—to start sampling
- ▶ *Play*—to playback the phrase
- *Stop*—to end a recording or playback in progress

You can change the recording source, playback speed and many other Phrase Sampler settings through the Auxiliary/Phrase Mode menus (see page 10).

G. DISPLAY - Shows you information about the current preset in Play Mode (see page 8), and menus of G-DEC settings when you press a Mode button {C, H}.

H. AUX / UTILITY / FX / AMP - Press to access the corresponding Mode menus (see pages 9-11).

I. SAVE - Saves the current G-DEC settings to a user preset (U00-U49).

J. EXIT - Press to return to Play Mode.

K. DATA WHEEL - Selects presets in Play Mode and adjusts G-DEC settings in the other Modes.

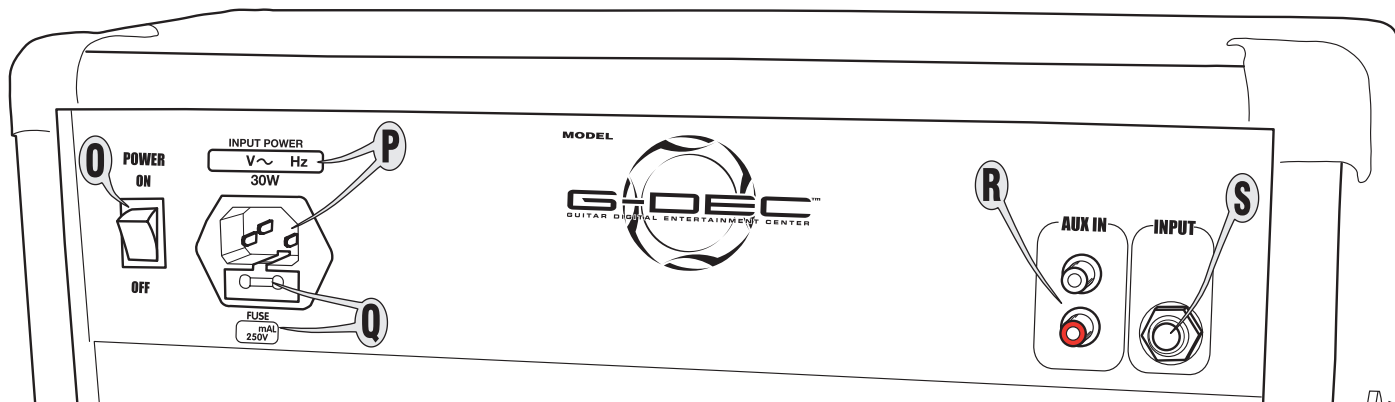
L. VOLUME - Adjusts the overall loudness of the G-DEC.

M. TONE - Adjusts the tone characteristics of your guitar. The Tone control does not affect the Drum section or the Auxiliary Input sound.

N. MIDI IN/OUT - *To transfer presets from your G-DEC:* Connect MIDI OUT to the MIDI IN port on another G-DEC (or your computer) using a MIDI cable. Then use Utility Mode (see page 11) and initiate either a "Dump Preset" to transfer the *current* preset, or a "Dump All" to transfer *all* presets. The receiving G-DEC will prompt you to select a preset to overwrite before a "Dump Preset" is completed.

To play General MIDI files on your computer through your G-DEC: Connect MIDI OUT on your properly configured computer sound card (or interface), to MIDI IN on the G-DEC. Then load and play the file in your MIDI playback software on your computer.

Rear Panel



O. POWER - Switches the G-DEC on-off.

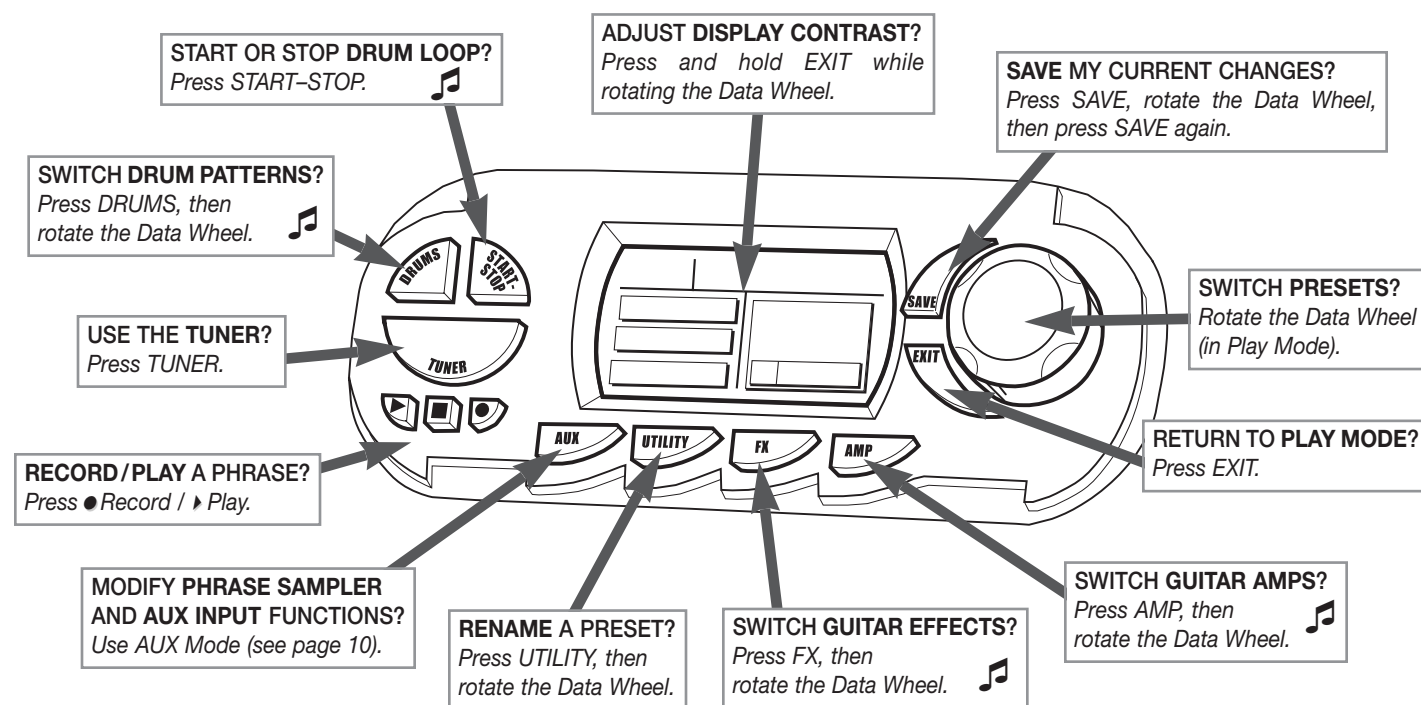
P. POWER CORD SOCKET - Connect your G-DEC to an A/C outlet using the included power cord.

Q. FUSE - Protects your G-DEC from electrical faults. Replace a blown fuse *only* with the type and rating specified below the fuse holder. To remove the fuse holder: Unplug the G-DEC power cord from the socket to expose the fuse holder. Use a small screwdriver to pry out the fuse holder using the notch on top.

R. AUX IN - Auxiliary input for your CD or MP3 player. Playback music through your G-DEC for accompaniment or to learn songs. Connect the (headphones) output on your player to the AUX IN "RCA" jacks using the proper cable or adapter. You can select a "focus" filter and adjust the auxiliary input level through the Aux Mode menus (see page 10).

S. INPUT - An extra input for an instructor or a friend to plug into.

How Do I...?

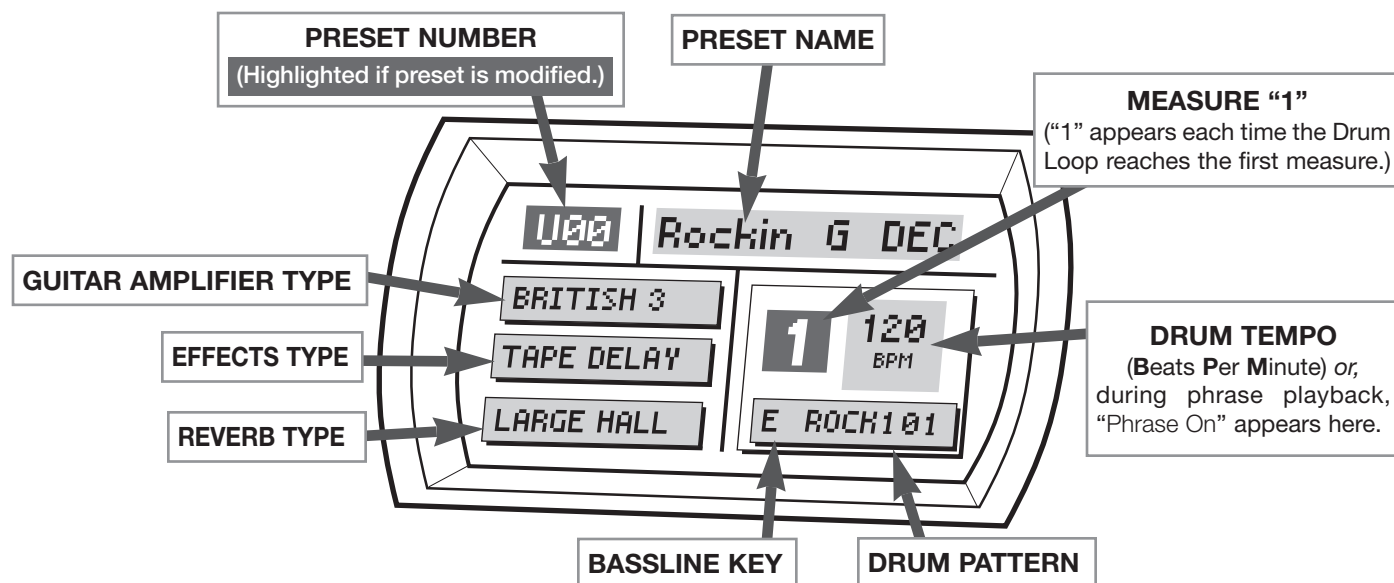


Play Mode Shortcut—Press and hold this button while rotating the Data Wheel to make a quick adjustment without leaving Play Mode.

Play Mode

Play Mode is the normal G-DEC mode, active at start-up. Play guitar, select presets and play the drum loop (or the phrase sampler) in Play Mode. Press EXIT to return to Play Mode from any other mode (Play Mode activates automatically after 60 seconds of inactivity in the other modes).

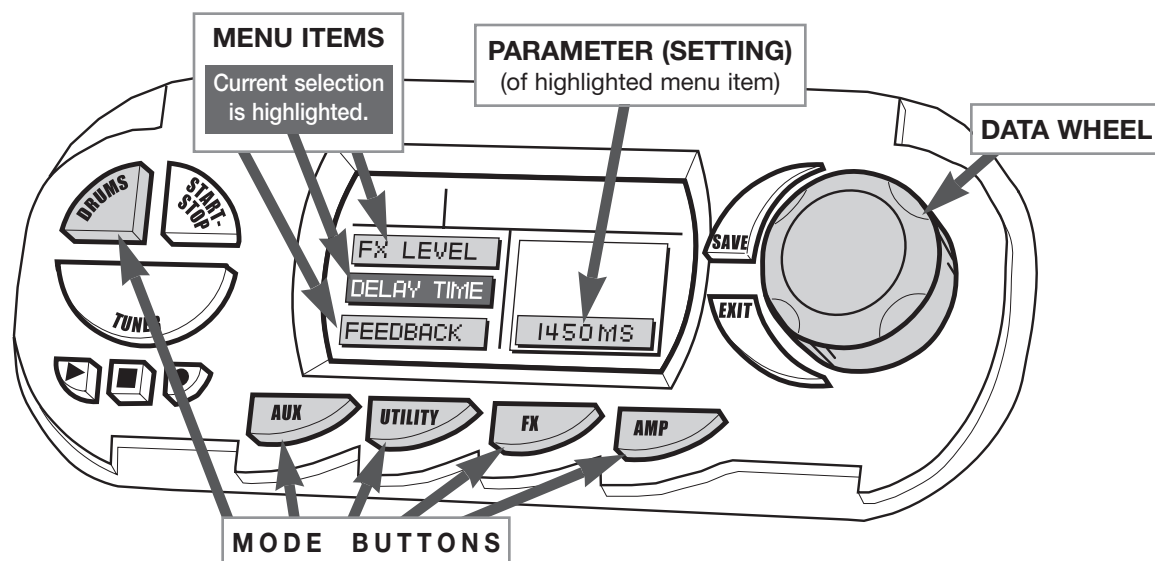
Information about the current preset is displayed in Play Mode:



Menu Navigation

You can adjust a huge variety of G-DEC settings through the menus of 5 different modes. Press **AMP**, **FX**, **DRUMS**, **AUX** or **UTILITY** (repeatedly) for menus, then turn the Data Wheel to adjust the highlighted menu's setting.

MENU SHORTCUT: First, press **AMP**, **FX**, **DRUMS**, **AUX** or **UTILITY** to enter that mode. Then, press and hold the same mode button while rotating the Data Wheel to navigate menus—in both directions!



Amp Mode



Use AMP Mode to select an amplifier type (first menu), then modify *that* amplifier's settings in menus 2–9.

Menu	Amp Menu Items	Settings—(Function)
1	AMP TYPE	Tweed–1, 2, 3, Blackface–1, 2, 3, Dyna-Touch–1, 2, 3, 4, British–1, 2, 3, Modern–1, 2, 3, Acoustic
2	GAIN	1-10 — (Adjusts amplifier distortion level.)
3	AMP VOLUME	1-10 — (Adjusts the volume of the current amplifier relative to other presets.)
4	BASS	1-10 — (Low frequency tone.)
5	MIDDLE	1-10 — (Mid-frequency tone.)
6	TREBLE	1-10 — (High-frequency tone.)
7	COMPRESSOR	Off, Low, Medium, High, Super — (Moderates volume range and provides sustain.)
8	TIMBRE	None, Full Body, Full Stack, Razors Edge, Bright Lite, Bass Boost, Nu Metal, Super Bright, Acoustic — (Tone filters.)
9	NOISE GATE	Off, Low, Medium, High, Super — (Cuts low volume noise.)

FX/Reverb Mode



Use FX/Reverb Mode to select an effect type (first menu), then modify *that* effect's settings in menus 2–6.

Effect Type Menu 1	Effect Settings (for the Effect selected in Menu 1)				
	Menu 2	Menu 3	Menu 4	Menu 5	Menu 6
NONE	—	—	—	—	—
MONO DELAY	Level	Delay Time	Feedback	Brightness	Input Level
TAPE DELAY	Level	Delay Time	Feedback	Flutter	Brightness
STEREO TAPE DELAY	Level	Delay Time	Feedback	Flutter	Brightness
DUCKING DELAY	Level	Delay Time	Feedback	Release	Response
REVERSE DELAY	Level	Delay Time	Feedback	Reverse Feedback	Brightness
AUTOPAN DELAY	Level	Delay Time	Feedback	Brightness	Input
SINE CHORUS	Level	Rate	Depth	Average Delay	Stereo
TRIANGLE CHORUS	Level	Rate	Depth	Average Delay	Stereo
SINE FLANGE	Level	Rate	Depth	Feedback	Stereo
TRIANGLE FLANGE	Level	Rate	Depth	Feedback	Stereo
PHASER	Level	Rate	Depth	Feedback	Stereo
TREMOLO	Level	Rate	Depth	Duty Cycle	Release
RING MODULATION DELAY	Level	Ring Mod Frequency	Delay Output Level	Delay Time	Feedback
PITCH SHIFT	Level	Pitch	Detune	Feedback	Pre-Delay
TOUCH WAH	Level	Response	Minimum Frequency	Maximum Frequency	Voice Type
FIXED WAH	Level	Frequency	Minimum Frequency	Maximum Frequency	Voice Type
VIBRATONE	Level	Rotor Speed	Doppler Effect	Depth	Stereo
AUTOSWELL	Level	Attack	Depth	Response	Rate
ALIENATOR	Level	Content	Tone	Minimum Content	Maximum Content
RESOLVER	Level	Bit Depth	Tone	Attack	Release
FUZZ	Level	Gain	Octave Level	Low Tone	High Tone
OVERDRIVE	Level	Gain	Low Tone	Mid Tone	High Tone
TOUCH WAH FUZZ	Level	Gain	Response	Octave Mix	Voice Type
FUZZ DELAY	Level	Gain	Delay Level	Delay Time	Feedback
OVERDRIVE DELAY	Level	Gain	Delay Level	Delay Time	Feedback
CHORUS DELAY	Level	Rate	Depth	Delay Time	Feedback
FLANGE DELAY	Level	Rate	Depth	Delay Time	Feedback
PHASE DELAY	Level	Rate	Depth	Delay Time	Feedback
ALIENATOR DELAY	Level	Content	Delay Level	Delay Time	Feedback

(FX/Reverb Menus 7 and 8 continued on next page.)

FX/Reverb Mode (continued)



Use FX/Reverb Mode to select a reverb type (menu 7), and adjust reverb level (menu 8).

Reverb Type Menu 7	Reverb Level Menu 8
NONE	1-10
AMBIENT	1-10
SMALL ROOM	1-10
LARGE ROOM	1-10
SMALL HALL	1-10
LARGE HALL	1-10
ARENA	1-10
SMALL PLATE	1-10
LARGE PLATE	1-10
SPRING	1-10
63 SPRING	1-10

Drums Mode



Use DRUMS Mode to select a drum pattern (first menu), then modify *that* drum pattern's settings in menus 2–6.

Menu	Drum Menu Items	Settings
1	DRUM PATTERN	1 Drop, 16 Hats, 32 Hats, 4 Beat, 5 On 4, 50 Shuf, 80 Funk, 80s Hop, Aerwalk, Ballad, Beastly, Bossa, Chicago, Clave, Classic, Country, Dblkick, Dblshuf, Disco, Dr Hop, Drive, Euro, Fever, Fiesta, Funk, Feelin, Grind, Grunge, Halves, Hardroc, Haze, Hiphop, Jazz, Kid, Latin, Latpony, Levee, Lilith, Mambo, Metal, Metrono, Miami, Party, Pop, Popstar, Punkpop, Reggae, Ride, Rock101, Rocbell, Rocbluz, Rock, Rocker, Salsa, Samba, Shaker, Shuffle, Ska, Smoke, So Bell, Soul, Speed, Steely, Surftom, Swedes, Swing, Train, Trouble, Viking, Waltz, Western
2	TEMPO	30-240 Beats per Minute
3	KEY	A, A#, B, C, C#, D, D#, E, F, F#, G, G#
4	DRUM LEVEL	1-10
5	BASS LEVEL	1-10
6	ACCOMPANIMENT LEVEL	1-10

Auxiliary/Phrase Mode



Use AUX/Phrase Mode to adjust the AUX IN jack settings (menus 1–2).

Use AUX/Phrase Mode to adjust the Phrase Sampler settings (menus 3–7).

Menu	Aux Menu Items	Settings—(Function)
1	AUX INPUT LEVEL	1-10 — (Adjusts the volume of whatever you have connected to the AUX IN jacks.)
2	AUX FILTER	None, Bass Focus, Bass Cut, Drum Focus, Lead Focus, Guitar Cut — (Use to accent different musical areas.)
3	PHRASE LEVEL	1-10 — (Phrase playback level.)
4	PHRASE MODE	Freeform, 4 Beat Lead — (Record with or without a lead in. 4 Beat Lead adjusts measure length for correct timing.)
5	PHRASE SOURCE	Aux In, Drums, Aux In + Drums, Guitar, All — (Select the source(s) that the Phrase Sampler records.) NOTE: To include drums in the sample (Source set to "All"), start the Drum Loop before you press ●Record.
6	PHRASE SPEED	Normal, Half Speed — (Phrase playback speed.)
7	PLAYBACK	Once, Repeat — (Playback the Phrase one time, or in an endless loop.)

Utility Mode



Use UTILITY Mode to rename presets, lock memory, transfer presets (MIDI) and manage the system.

Menu	Utility Menu Items	Procedure—(Function)
1	EDIT PRESET NAME	Rotate Data Wheel, then follow the instructions displayed on screen.
2	MEMORY LOCK	Rotate Data Wheel — <i>(Prevents accidental preset saves and MIDI dumps, but NOT a Factory Reset, see below.)</i>
3	DUMP PRESET	Press SAVE — <i>(Transfers the current preset to another G-DEC or computer connected to the MIDI OUT port.)</i>
4	DUMP ALL	Press SAVE — <i>(Transfers ALL presets to another G-DEC or computer connected to the MIDI OUT port.)</i>
5	FACTORY RESTORE	Press SAVE twice — <i>(Restores every G-DEC setting to the original settings. OVERRIDES MEMORY LOCK.)</i>
6	AMP UPDATE	<i>(Reserved for future G-DEC software updates.)</i>

G-DEC® MIDI Guide

MIDI OVERVIEW

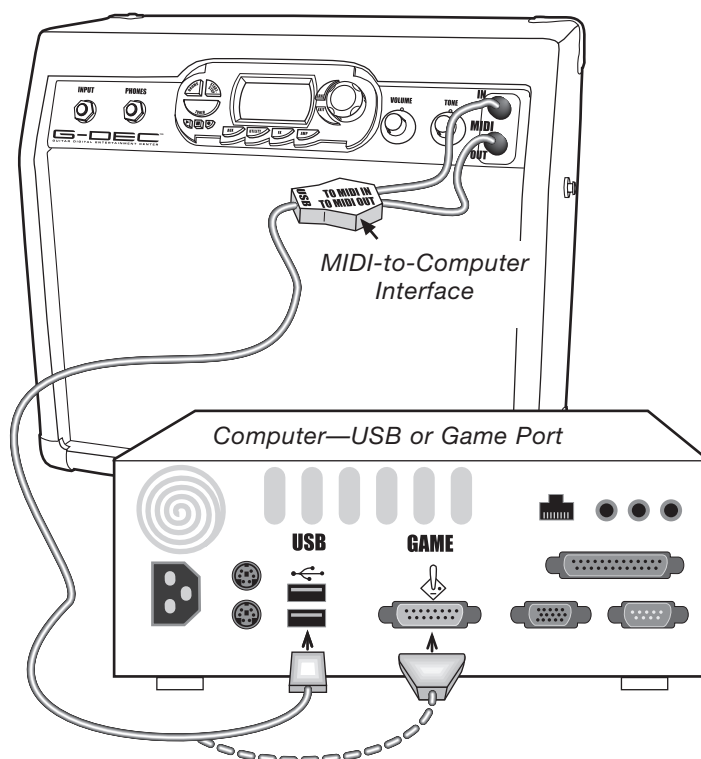
The G-DEC is well equipped to handle a number of useful MIDI functions. MIDI stands for “Musical Instrument Digital Interface” which is a language that lets multiple digital musical items (keyboards, effects, synthesizers, computers, etc.) communicate with each other. This document can’t possibly cover all the MIDI possibilities you may encounter. If you desire more information, visit <http://www.midi.org> online or search for “MIDI” using your favorite search engine.

Basic MIDI Setup

The most basic MIDI operations on the G-DEC require use of a MIDI interface device connected to a personal computer. Most MIDI interface devices will use USB or the game port on older PCs and are available at most musical instrument retailers. Refer to the interface manufacturer for proper device setup. To get the most out of the G-DEC MIDI capability, connect the MIDI In port on the G-DEC to the MIDI Out port on your MIDI interface with a standard MIDI cable. Also connect the MIDI Out port on the G-DEC to the MIDI In port on your MIDI interface. See figure for connections.

Dumping and Loading Presets

The above configuration will allow you to dump and load presets to and from the computer. To dump any one or all presets (see Utility Mode page 11) you will need third party software running on the PC. Search for a MIDI librarian utility or SYSEX utility from your favorite search engine online that works with your specific computer. You will need an application that accepts SYSEX dumps from external devices. Within your selected software package, you will need to configure MIDI ports and tell the application to wait to receive a SYSEX dump. Consult the



documentation for your specific SYSEX application on how to perform these tasks. Once configured, you can then dump presets to a “.SYX” file which then can be posted or emailed to share with other G-DEC users.

To load a preset into the G-DEC you will also need third party software running on the PC. The same application used for receiving SYSEX dumps will most likely be able to send SYSEX data as well. Load a G-DEC preset file (ending in .SYX) into your configured SYSEX application and send the preset. The G-DEC is always ready to receive these files. Once a valid preset file is received by the G-DEC, it will bring you to the Save prompt (see How Do I...? on page 7 for the Save function).

Updating the G-DEC Software

The above MIDI configuration will also allow you to update your G-DEC software if and when an update becomes available from Fender, downloadable from <http://www.fender.com>. G-DEC update information will be made available from the download site. In general, to perform this operation, access the “Amp Update” item in the Utility Menu (see Utility Mode, page 11) and follow the on-screen instructions. Press Save to start the process. When the G-DEC states it is ready to receive a MIDI Update, use your selected SYSEX application (the same used for preset dumps and loads) to send the G-DEC update file to the amp. Other important instructions may be included with the update package.

Using the On-Board Synthesizer with an External Controller

The G-DEC has a full General MIDI compatible synthesizer on board that may be triggered using an external MIDI controller. Simply connect the MIDI Out port of your MIDI controller device (typically a keyboard or PC) to the MIDI In port on the G-DEC. Set your MIDI controller device onto any channel other than 10 and it will control the onboard G-DEC synthesizer (channel 10 is used for a drum kit). To change voices, use the appropriate program change message on your MIDI controller. Consult the MIDI controller device documentation on how to perform this function on your specific controller. Refer to the Appendix for channels of General MIDI voicings.

Streaming MIDI Files to the G-DEC

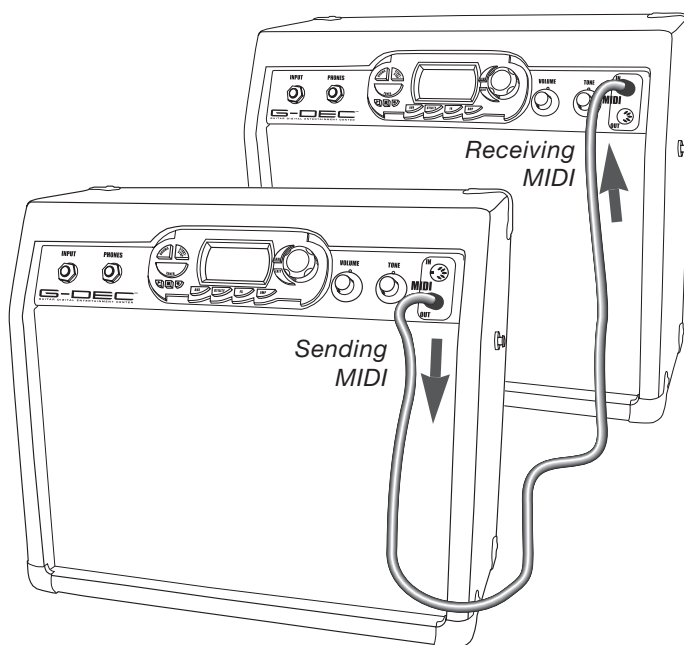
If you wish to play any available General MIDI file from your PC through the G-DEC, you will need a third party PC application that is able to play MIDI files to an external MIDI port. Search for a MIDI player or MIDI sequence utility from your favorite search engine online that works with your specific computer. Consult the documentation for your application on proper configuration. Once properly configured, play any MIDI file (typically a file with the .MID extension) from your MIDI player or sequence application. The MIDI Out port of your MIDI interface device must be connected to the MIDI In port on the G-DEC. Note that if the song is playing but sounds cluttered, make sure any MIDI thru function in your application is disabled, or simply unplug the MIDI cable from the MIDI Out port on the G-DEC. The G-DEC always outputs any MIDI information received on the MIDI In port on the MIDI Out port which may result in a repeated loop if your application has MIDI throughput enabled.

Advanced MIDI sequence applications will allow you to create your own MIDI songs for playback on the G-DEC. Note also that the G-DEC does not store MIDI files onboard. It simply “streams” the MIDI song data to the onboard synthesizer and requires a connection to the PC or MIDI sequencer at all times for this functionality.

If you would like to construct a MIDI song of your own using some of the patterns onboard the G-DEC simply play the pattern you would like and record as much MIDI Out data from the G-DEC as you desire using your MIDI sequence utility application on the PC. Note this will not record any guitar audio, simply MIDI data from the patterns. You can then modify and arrange patterns into songs using your MIDI sequencer software application and stream the resulting file back to the G-DEC as mentioned above. Refer to the Appendix for channels of General MIDI voicings.

Connecting Two G-DECs Together

You may also share presets directly from one G-DEC to another by simply connecting the two G-DECs with a standard MIDI cable. Connect the MIDI cable to the MIDI Out port of the G-DEC that holds the preset you want to share. Then connect the other end of that MIDI cable to the MIDI In port on the G-DEC into which you wish to load the preset. Then follow the Dump Preset procedure (see Utility Mode, page 11) on the G-DEC that holds the preset you want to share.



Another fun thing to try with two G-DECs is to connect them with a MIDI cable as described above for a synchronized jam session or lesson! On the G-DEC with the MIDI Out port connected, select a desired preset to jam along with. On the other G-DEC select any guitar tone desired. Then press Start/Stop on the first G-DEC to

start the drum pattern. The MIDI data is then sent from the first G-DEC to the second and is synchronized. Now you are both able to jam along to the same synchronized drum pattern with two different guitar tones!

APPENDIX: MIDI CHANNEL – (Any except Channel 10)

PROGRAM CHANGE

GENERAL MIDI

1	(Grand) Piano 1
2	(Bright) Piano 2
3	(Electric Grand) Piano 3
4	Honky-Tonk Piano
5	Electric Piano 1
6	Electric Piano 2
7	Harpsichord
8	Clavi
9	Celesta
10	Glockenspiel
11	Music Box
12	Vibraphone
13	Marimba
14	Xylophone
15	Tubular Bells
16	Santur
17	Drawbar Organ
18	Percussive Organ
19	Rock Organ
20	Church Organ
21	Reed Organ
22	Accordion (French)
23	Harmonica
24	Tango Accordion
25	Acoustic Guitar (Nylon)
26	Acoustic Guitar (Steel)
27	Electric Guitar (Jazz)
28	Electric Guitar (Clean)
29	Electric Guitar (Muted)
30	Overdriven Guitar
31	Distortion Guitar
32	Guitar Harmonics

PROGRAM CHANGE

GENERAL MIDI

33	Acoustic Bass
34	Finger Bass
35	Picked Bass
36	Fretless Bass
37	Slap Bass 1
38	Slap Bass 2
39	Synth Bass 1
40	Synth Bass 2
41	Violin
42	Viola
43	Cello
44	Contrabass
45	Tremolo Strings
46	Pizzicato Strings
47	Orchestral Harp
48	Timpani
49	String Ensemble 1
50	String Ensemble 2
51	Synth Strings 1
52	Synth Strings 2
53	Choir Aahs
54	Voice Oohs
55	Synth Voice
56	Orchestra Hit
57	Trumpet
58	Trombone
59	Tuba
60	Muted Trumpet
61	French Horn
62	Brass Section
63	Synth Brass 1
64	Synth Brass 2

(continued on next page)

APPENDIX (continuation): **MIDI CHANNEL** – (Any except Channel 10)

<u>PROGRAM CHANGE</u>	<u>GENERAL MIDI</u>	<u>PROGRAM CHANGE</u>	<u>GENERAL MIDI</u>
65	Soprano Sax	97	FX 1 (Rain)
66	Alto Sax	98	FX 2 (Soundtrack)
67	Tenor Sax	99	FX 3 (Crystal)
68	Baritone Sax	100	FX 4 (Atmosphere)
69	Oboe	101	FX 5 (Brightness)
70	English Horn	102	FX 6 (Goblins)
71	Bassoon	103	FX 7 (Echoes)
72	Clarinet	104	FX 8 (Sci-Fi)
73	Piccolo	105	Sitar
74	Flute	106	Banjo
75	Recorder	107	Shamisen
76	Pan Flute	108	Koto
77	Blown Bottle	109	Kalimba
78	Shakuhachi	110	Bag Pipe
79	Whistle	111	Fiddle
80	Ocarina	112	Shanai
81	Lead 1 (Square)	113	Tinkle Bell
82	Lead 2 (Sawtooth)	114	Agogo
83	Lead 3 (Calliope)	115	Steel Drums
84	Lead 4 (Chiff)	116	Woodblock
85	Lead 5 (Charang)	117	Taiko Drum
86	Lead 6 (Voice)	118	Melodic Tom
87	Lead 7 (Fifths)	119	Synth Drum
88	Lead 8 (Bass + Lead)	120	Reverse Cymbal
89	Pad 1 (Fantasia)	121	Guitar Fret Noise
90	Pad 2 (Warm)	122	Breath Noise
91	Pad 3 (Polysynth)	123	Seashore
92	Pad 4 (Choir)	124	Bird Tweet
93	Pad 5 (Bowed)	125	Telephone Ring
94	Pad 6 (Metallic)	126	Helicopter
95	Pad 7 (Halo)	127	Applause
96	Pad 8 (Sweep)	128	Gunshot

Access G-DEC® Drums from an External Controller

The G-DEC synthesizer also contains a standard drum kit accessible using MIDI channel 10 using a program change value of 1 (which may be set on most MIDI controller

devices). Most MIDI notes on the keyboard correspond to a different instrument within the standard drum kit (not all notes are used). Other drum kits are available on MIDI channel 10 using program change values 9, 17, 25, 26, 33, 41, 49, 57, or 127.

Specifications

TYPE: PR 520

PART NUMBER:

2350000000 (120V, 60Hz) US	2350000900 (120V, 60Hz) US DS
2350001900 (110V, 60Hz) TW DS	2350003900 (240V, 50Hz) AUS DS
2350004900 (230V, 50Hz) UK DS	2350005900 (220V, 50Hz) ARG DS
2350006900 (230V, 50Hz) EUR DS	2350007900 (100V, 50Hz) JPN DS
2350009900 (220V, 60Hz) ROK DS	

POWER REQUIREMENTS: 50W

POWER OUTPUT: 15W RMS into 8Ω @ 5%THD

POWER AMP INPUT IMPEDANCE: 1MΩ

FUSES:

630mA, 250V for 100/110/120V versions

315mA, 250V for 220V/230V/240V versions

DIMENSIONS

HEIGHT: 15.75 in (40 cm)

WIDTH: 13.75 in (35 cm)

DEPTH: 7.25 in (18.5 cm)

WEIGHT: 16.5 lb (7.4 kg)



Product specifications are subject to change without notice.

